



REGIONAL SPECIALISED METEOROLOGICAL CENTRE -TROPICAL CYCLONES, NEW DELHI TROPICAL WEATHER OUTLOOK

DEMS-RSMC TROPICAL CYCLONES NEW DELHI DATED 28.08.2025

TROPICAL WEATHER OUTLOOK FOR THE NORTH INDIAN OCEAN (THE BAY OF BENGAL AND THE ARABIAN SEA) VALID FOR THE NEXT 168 HOURS ISSUED AT 0600 UTC OF 28.08.2025 BASED ON 0300 UTC OF 28.08.2025.

LAND:

Yesterday's Well Marked Low Pressure area over northwest Bay of Bengal off Odisha coasts weakened into a **low-pressure area** over South Odisha adjoining Chhattisgarh at 0000 UTC and moved slowly west-northwestwards and lay over central parts of Chhattisgarh & neighbourhood at 0300 UTC of today, the 28th August 2025. The associated cyclonic circulation extended upto 5.8 km above mean sea level tilting southwestwards with height.

As per INSAT 3D imagery at 0300 UTC, associated scattered to broken low and medium clouds with embedded intense to very intense convection over south Chhattisgarh, north coastal Andhra Pradesh and westcentral Bay of Bengal (minimum cloud top temperature -70°C to -90°C) and moderate to intense convection lay over Jharkhand, south Odisha and northwest Bay of Bengal (minimum cloud top temperature -50°C to -70°C).

BAY OF BENGAL:

Scattered to broken low and medium clouds with embedded intense to very intense convection lay over westcentral Bay of Bengal and Andaman Sea. Scattered low and medium clouds with embedded moderate to intense convection lay over rest parts of the Bay of Bengal.

***PROBABILITY OF CYCLOGENESIS (FORMATION OF DEPRESSION) DURING NEXT 168 HRS:**

24 HOURS	24-48 HOURS	48-72 HOURS	72-96 HOURS	96-120 HOURS	120-144 HOURS	144-168 HOURS
NIL	NIL	NIL	NIL	NIL	NIL	NIL

***NOTE: EVERY 24HR FORECAST IS VALID UPTO 0300 UTC (0830 IST) OF NEXT DAY**

ARABIAN SEA:

Scattered to broken low and medium clouds with embedded intense to very intense convection lay over southeast Arabian Sea, Lakshadweep Islands area and moderate to intense convection lay over eastcentral Arabian Sea off Maharashtra – Goa - Karnataka coasts and Comorin area. Scattered low and medium clouds with embedded weak to moderate convection lay over southwest Arabian Sea.

***PROBABILITY OF CYCLOGENESIS (FORMATION OF DEPRESSION) DURING NEXT 168 HRS:**

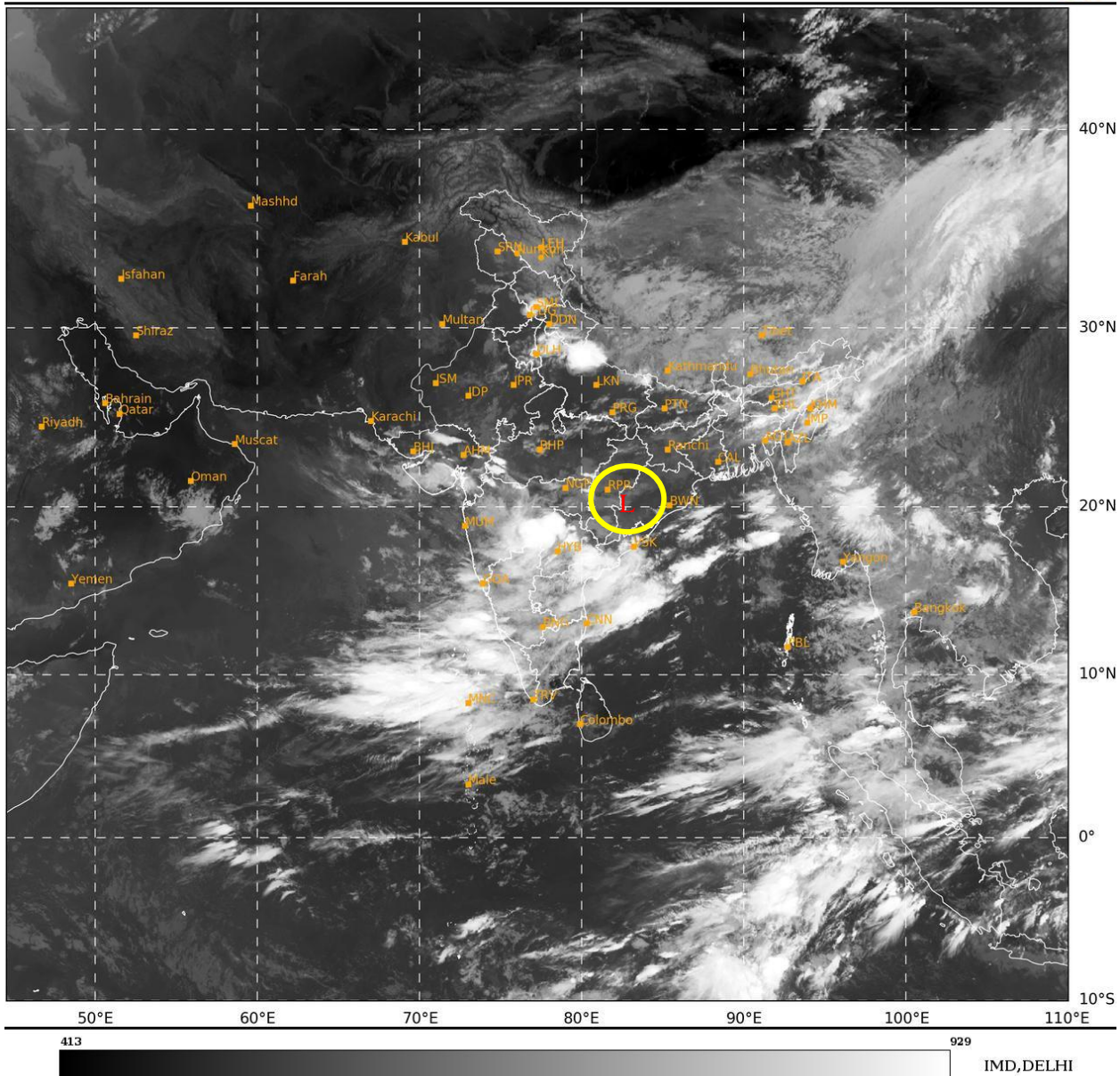
24 HOURS	24-48 HOURS	48-72 HOURS	72-96 HOURS	96-120 HOURS	120-144 HOURS	144-168 HOURS
NIL	NIL	NIL	NIL	NIL	NIL	NIL

***NOTE: EVERY 24HR FORECAST IS VALID UPTO 0300 UTC (0830 IST) OF NEXT DAY**

REMARKS: NIL

SAT : INSAT-3DR IMG
IMG_TIR1 10.8 um
LIC Mercator

28-08-2025/(0315 to 0342) GMT
28-08-2025/(0845 to 0912) IST



L: Low-Pressure Area

Cloud distribution: (a) Isolated: <25%, Scattered:25-50%, Broken: 51-75%, Solid:>75%, Convection Intensity: (a) Weak: Cloud Top Temperature(CTT)>-25°C,(b)Moderate:CTT:-25°Cto-40°C,(c)Intense:CTT: -41°Cto -70°Cand(d)Very Intense::Less than -70°C
PROBABILITYOFCYCLOGENESIS(FORMATIONOFDEPRESSION):NIL:0%,LOW:1-33%,MODERATE:34-66%ANDHIGH:67-100%
ThisisaguidanceBulletinforWMO/ESCAPPanelMembercountries.VisitrespectiveNationalwebsitesforCountryspecificBulletins